

POINT LOMA
HIGH SCHOOL
FOUNDATION
& ALUMNI
ASSOCIATION



UPDATE

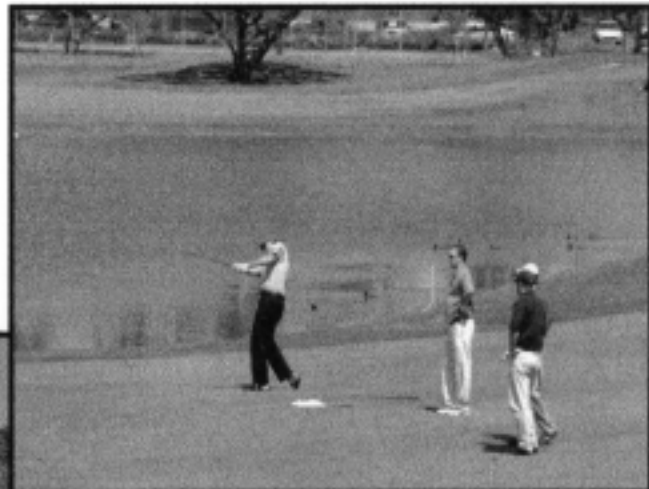
June 2005

Golf Tournament Scores Big for PLHSFAA

by Will Hage, PLHSFAA President-Elect

The location was different but the game was the same! It was a fun day under a gorgeous blue sky at the 2005 Golf Tournament played on Monday April 25 at Riverwalk Golf Course in Mission Valley. There were over 80 participants and 18 hole sponsors. We were very pleased to have GMAC Mortgage as our Corporate Sponsor.

Congratulations to the winners of the Golf Tournament - **Jim DeVito, Steve Haase, David Clarkin, and Ken McCrobie**. The longest drive winners were – **Steve Haase and Adam Antinone**. And, **David Clarkin** won the raffle prize of an all-inclusive destination vacation package. The Foundation netted close to \$6,000



from the tournament. We thank all of the participants and volunteers who helped to make this a successful event! See you next year.

Visit www.plhsfaa.com for additional pictures from the Tournament!

The PLHSFAA Update is published thrice yearly by the Point Loma High School Foundation and Alumni Association, 1220 Rosecrans St., Box 247, San Diego, CA 92106-2674. Tel: 619-226-4509
Executive Director: Kim Melhorn Jessop

Editor: Leslie Bruce Contributors: Bobbi Samilson, Karen Tisdale, Radmila Fulton, Gretchen Pelletier, Susanne Ballantyne, Larry Zeiger, Pat Baker, Laurie Hurl, Kim Jessop and Will Hage

Inside this Issue:

Co-Presidents Message, p. 2

80th Anniversary Plans p. 3

Landscape Project update, p. 9

Booster News, p. 7

Reunions, p. 8 and so much more!

Renew your membership!!! Your contributions and sustaining donations allow us to make a difference at PLHS!!

Farewell Message From PLHSFAA Co-Presidents

By Radmila Fulton and Karen Tisdale

As our term ends, it seems a rite of passage to look back and review PLHSFAA's accomplishments over the course of the year. As always, the Foundation has continued its commitment to the students, staff, parents, and alumni of Point Loma High School.

As we close out our year, we are proud to present 6 scholarships to outstanding seniors at the Senior Awards program on June 2 along with a 10-year membership to the Foundation. Parents, please consider giving your graduating student a membership to the Foundation so that they continue to be in touch with PLHS.

And looking forward, we will be honoring our teachers and staff throughout the year as part of the "Pearls of Wisdom" 80th anniversary celebration of PLHS on November 12 at Sea World. We are looking for donors and sponsors to make this event spectacular and help us with our continued fundraising efforts.

Looking back to the beginning of the year, we set two goals. First, to "get a shovel in the dirt" for our landscape project which is designed to increase the safety of the students and beautify the school and, second, to increase our outreach to members and alumni. This summer, we are eagerly anticipating the installation of a monument sign with clean-up and landscaping at the intersection of Voltaire and Chatsworth to welcome students and visitors to the school. Many thanks to school board member, **John DeBeck**, for his support of this project and to the professionals from our community that will be donating their time! Our landscape committee of **Cammie Ingram**, **Doug Harvey**, and **Ann Hix** has spent hours, days, years, committed to this project. It is truly exciting to see it getting underway!

We've accomplished our second goal through this new and third edition of the Newsletter, the updating and organizing of our member and alumni databases, and improving our website (www.plhsfaa.com). **Leslie Bruce**, our newsletter editor, spends many hours on each issue, yet took on a third edition with a smile. Thank you, Leslie! Thank you also to our Executive Director, **Kim Jessop**, for handling the arduous task of database reorganization and to **Bob Dagleish** (Class of '57) for updating and expanding our website. Alums, the website is a great way to re-connect with your fellow classmates!

Of course, we could not have accomplished anything without the able assistance of our board members. Special thanks to: **Gretchen Pelletier**, for sharing her

2



wealth of experience, knowledge, and new ideas regarding fundraising; **Will Hage** for his success with the Golf Tournament; **Cathy Edging** for promoting e-scrip at school events; **Laurie Hurl**, head counselor, for spearheading the 80th anniversary of PLHS; **John Bauer** for establishing e-commerce on our website; **Leslie Rose** for handling our membership drive; **Kelly Oakes** for updating our merchandise for sale at the OB Fair on June 25; **Carol Moore** (Class of '57) for organizing the PLHS historical effects; **Susanne Ballantyne** for keeping us updated on our alumni; **Bonnie Johnson** for keeping our financial records in order; **Pat Baker** for chairing our Gifts and Grants committee; **John Baker** for taking minutes of our meetings; and, of course, our enthusiastic and supportive new principal, **Bobbie Samilson**. We are impressed with Bobbie's dedication to the students and to improving the school. She is a great asset and we are lucky to have her!

We are turning it over to Will Hage (Class of '93), our incoming President. As he has reminded us, he is "still young." *Hey, Will, so are we!*

We hope that you enjoy the summer, and remember to support the Foundation, either monetarily or with your time. Thank you!

Support the Foundation . . . Make the Difference!

*Radmila
and
Karen*

Point Loma High School Foundation and Alumni Association
invites you and your guests to the

**Point Loma High School
80-YEAR Anniversary**



A Gala Celebration and All-Class Reunion
RECOGNIZING POINT LOMA HIGH TEACHERS AND STAFF THROUGHOUT
THE YEARS

**Saturday, November 12, 2005
SEA WORLD PAVILION**

6:30 P.M., Silent Auction, No-host Cocktails

7:30 to Midnight, Dinner, Dancing, Dolphin Show, Entertainment, Live Auction

**Cocktail Attire
Complimentary Parking**

For further information please call 619- 224-9904 or fax 619-269-1271

bonjohnson@cox.net or visit our Website: www.plhsfaa.com

Please detach and return to Point Loma High School Foundation and Alumni Association c/o Bonnie Johnson, 2440 Chatsworth Blvd., San Diego, CA 92106-2674

Name(s): _____ PLHS Class of: _____

Address: _____

City: _____ State: _____ Zip: _____

Phone: () _____ Email: _____

Count me in! Please make _____ reservations at \$80 each, \$ _____.

Please reserve _____ table(s) for 10 at \$800 per table, \$ _____.

Enclosed is my check payable to PLHS&AA.

Please charge my MC/Visa Account # _____ Exp. date ____/____.

Signature: _____

- I'd like to sponsor a current or retired teacher or staff member \$70.
- I'd like to sponsor a current or retired teachers' or staff members' table \$700.
- Contact me for sponsorship of the event or to donate auction item.
- So sorry to miss this event. Here is my tax-deductible contribution \$ _____.

\$ _____

Or go to our web site and pay on-line! www.plhsfaa.com

Tax ID # 95-3800169

\$25 tax deductible per person

*Bobbie
Samilson*

Principal's Message

Before you finish reading this newsletter, please be sure to mark your calendar for the 80th birthday party on November 12, 2005. It is amazing how many people in San Diego have connections to Point Loma High School. Wouldn't it be wonderful to have everyone together and share the stories, history, and hopes for the future of such a beloved alma mater?

I continue to be impressed with the community and parent professionalism, support and dedication as we move forward with the campus beautification and safety project. Our last meeting included representatives from the district including our school board member, Mr. DeBeck, and we look forward to their support of our project, as well.

We are so grateful for the most recent generous donations. The San Diego Foundation Weingart-Price Fund is providing \$150,000 to build the all weather track. We hope to have that work done over the summer. The San Diego Foundation Hervey Family Fund provided the funds for the 29th musical production by The Gotta Sing Gotta Dance Company under the leadership of Mr. Zeiger.

The Crescendo Fund Raiser at the Clifford Mansion and RoseCroft Gardens was a huge success in raising money to support our Instrumental Music Program. Thank you to all of the community businesses, alumni and families for their support.

Our students are just incredible. Here are just a few highlights of their accomplishments:

• Our National Comedy Theater Team is the County Champion – best of 22 high schools.

• Two films were nominated for the iVIE (Innovative Video in Education) Awards – the Academy Awards of Student Films.

• The PLHS Sailing Team won the Pacific Coast Championships and the Team Racing Elimination and every regatta this season culminating in the Disney Trophy. This month they will be defending National Titles in Port Angeles, Washington, and Marin County, Florida.

• The Symphonic Winds and Concert Band won superior ratings at the Magic Mountain Festival.

• Our spring sports are doing well, with playoff possibilities and/or league championships in Baseball, Boy's Volleyball, Women's Swim team, and Men's Golf.

Many of our students' successes would not be possible without your support and our dedicated staff. We are so thankful to all of you for being involved in the future of our school, community, and most of all our students.



SPECIAL THANKS to La Roi Glover

Coaches Bennie Eden's, Mike Hastings, Dave Aros and Head Counselor, Laurie Hurl had the pleasure of meeting with PLHS graduate La Roi Glover on Friday, April 29, 2005. La Roi Glover gives Point Loma High School students two \$5,000 scholarships each year.

In addition he made a significant donation to the new football field. We thank La Roi for his continued support of Point Loma High.



Are your PLHSFAA membership dues up to date? Check your address label!

Foundation dues expire at the end of the school year. Payment of your membership dues, and your additional contributions, help us to fund programs and activities on campus that make a difference at PLHS. In addition, they allow us to continue to provide you with updates on Foundation and Alumni events, and activities.

So, how do you know if your dues are up to date? Check the address label on this issue of the newsletter. It will have a date on it. If it says Expired, or 2005, your membership is expiring this June. If it says 2006 or beyond, you are paid through next year. Note that Lifetime (LT) members are paid for life (though your continued contributions help offset the cost of our newsletter mailings and allows us to put our money toward programs, activities and important improvements on campus.)

Renewing is easy:

1. Used the enclosed membership form and mail with your \$25 dues (check or Credit card) to the PLHSFAA office at 1220 Rosecrans St. #247, San Diego, CA 92106.
2. Go to www.PLHSFAA.com where you will find an online registration form and can pay using our secure PayPal credit card payment system.
3. In the Fall we will hold a membership drive for all expired members. You can help save us stamps (and save yourself getting another solicitation letter) by renewing now!

If you have questions regarding membership, please contact Kim at the FAA office 226-4509 or kimj@plhsfaa.com.

YES, I'd like to support Point Loma High School through PLHSFAA programs!

Your donation helps the **Point Loma High School Foundation and Alumni Association** continue its mission to raise funds for school improvements, scholarships, and programs.

It's easy to register and contribute. There are two options:

- Log on to www.plhsfaa.com to register and use our new Pay Pal secure credit card payment system to join and donate from your computer. Save stamps and paper!
- Or, complete this form and send it with your donation to:
PLHSFAA 1220 Rosecrans St. #247, San Diego, CA 92106

Please print clearly:

Name: _____

Class of? _____ Maiden name: _____

Address: _____

City: _____ State: _____ Zip: _____

Phone: (____) _____

Email: _____

I would prefer to receive news by E-mail.

Would you like to designate your Contribution to a specific area of interest?

Membership \$25

Renewal New

Additional Gift:

\$25 \$150 \$500

\$50 \$200 Other \$ _____

Total: \$ _____ (Membership + Contribution)

Method of Payment:

Check enclosed (Payable to PLHSFAA)

Visa MasterCard

Card Number: _____

Billing Address: _____

Exp. Date: _____ Billing Zip: _____

Signature: _____

Your donation is tax deductible.
Tax ID #95-3800169

PLHS 80th Anniversary Celebration on November 12

SPONSORS WELCOME!

by Laurie Hurl, Head Counselor, Point Loma High School,
80 Years Committee Co-Chair

On November 12, 2005, Point Loma High School will celebrate its 80th anniversary. The community, through the efforts of the Point Loma High School Foundation and Alumni Association, will gather at Sea World Pavilion to celebrate 80 years of education in Point Loma.

As we observe our special milestone, we honor all those who have contributed to the education of Point Loma High School students throughout the years. This anniversary commemoration intends to raise \$80,000 for all aspects of Point Loma High School (arts, athletics, beautification, broadcast/multi-media system, classroom enrichment, scholarships, technology, etc.). Hundreds of graduates, parents, staff, community leaders, as well as Point

Loma residents will be in attendance at the social event, and we would like you to be a part of it as well.

Your generous donation of merchandise or a gift certificate for our silent or live auction will help to ensure our success in reaching this goal. Also available are opportunities to advertise your business or show your support as a program sponsor. Your donation or sponsorship will be recognized in the evening's commemorative program, and your donation is, of course, tax-deductible. Donation and sponsorship forms are enclosed.

We appreciate your support and look forward to a successful event. Please return your completed form(s) to Point Loma High School.

80th BIRTHDAY CELEBRATION SPONSORSHIP OPPORTUNITIES

"PEARLS OF WISDOM"

NOVEMBER 12, 2005

SEA WORLD

POINTER Platinum \$5,000.00+

Exclusive sponsorship of the evening's fireworks display in all printed material (for top donor), prominent signage at anniversary event, full-page (black-and-white) advertisement in program, reserved table for ten with preferred seating

POINTER Gold \$4,000.00

Prominent signage at anniversary event, full-page (black-and-white) advertisement in program, reserved table for ten with preferred seating

POINTER Silver \$3,000.00

Prominent signage at anniversary event, half-page (black-and-white) advertisement in program, six tickets to event with preferred seating

POINTER Bronze \$1,500.00

Signage at anniversary event, quarter-page (black-and-white) advertisement in program, four tickets to event with preferred seating

POINTER Maroon \$500.00

Quarter-page (black-and-white) advertisement in program, two tickets to anniversary event with preferred seating

POINTER Pal \$200.00

Business card (black-and-white) advertisement in the program

I wish to make a contribution in the amount of \$ _____.

• My contribution is enclosed, a check payable to PLHSFAA.

• Please charge my contribution to MC/Visa # _____ expiration date _____

• Signature _____

• Donor name and phone _____

• Or pay online at www.plhsfaa.com.

We will contact you re: advertisements and seating.

6 **Deadline for advertisements – August 31, 2005**

Please return to PLHSFAA
C/O Laurie Hurl, Head Counselor, PLHS
4629 Tivoli Street, San Diego, Ca 92107
Fax 619-222-3634 lhurl@sandi.net

GREAT NEWS from PLHS Volleyball Boosters

As of May 2005, the Point Loma High School Women's Volleyball program has a new Women's Varsity Coach. Her name is **Rachel Errthum**. She played for Nebraska and has a long list of qualifications. She is currently the coach of Club Pacific's 17-Asics team. She will be a great addition to the program. **Matt Osborn** has been doing a great job with the guy's team. We hope that they can make the playoffs.

We held a May Volleyball camp and then will be setting up a summer camp in July. These camps will be open to any player who is interested. We will have more information as the camps as they become scheduled. Rachel is also interested in starting strength and conditioning program at the school. Emails will be going out as more information becomes available.

We will be going to both Dana & Correia soon to let them know of the programs and plans. If you know of anyone that might be interested or any prospective players, please let them know how to contact us.

PLHS Men's & Women's Volleyball Booster Meetings are held the third Thursday of the month, on PLHS campus, in Room 301, at 7:00pm (5-19, 6-16). Please join us; we look forward to your input and assistance.

If you would like to be added to our email list or have questions, please call or email **Bryan East** at 619-222-3502 coastaldesign@sbcglobal.net.



Baseball Boosters Step Up to the Plate

This year's baseball boosters are up, running, and rounding the bases toward a home run! Initiated at the end of 2004 by this year's president, Vonda Fontaine, a full board was established by early 2005 prior to the start of the season. Please welcome our new Head Coach, **Jon Posternack**.

The members are committed to the success of the baseball organization. The mission of the PLHS Baseball Booster program is to promote team awareness in the community and to increase pride and morale among the coaches, players, parents, and friends of the program.

The boosters hosted this year's Baseball Recognition dinner at the Point Loma Lodge, on Friday, May 20, 2005, which included a silent auction and raffle. This will be an annual event open to the community.

The boosters' website is full of great information, including up to date player and game stats for the Varsity, JV, and Freshman teams! Check it out at www.plhsbaseball.org.

2005 Board members:

Vonda Fontaine - President

Daniel Fontaine - Vice President

Sue Cox - Program Chair

Amber Kaufman - Membership Chair

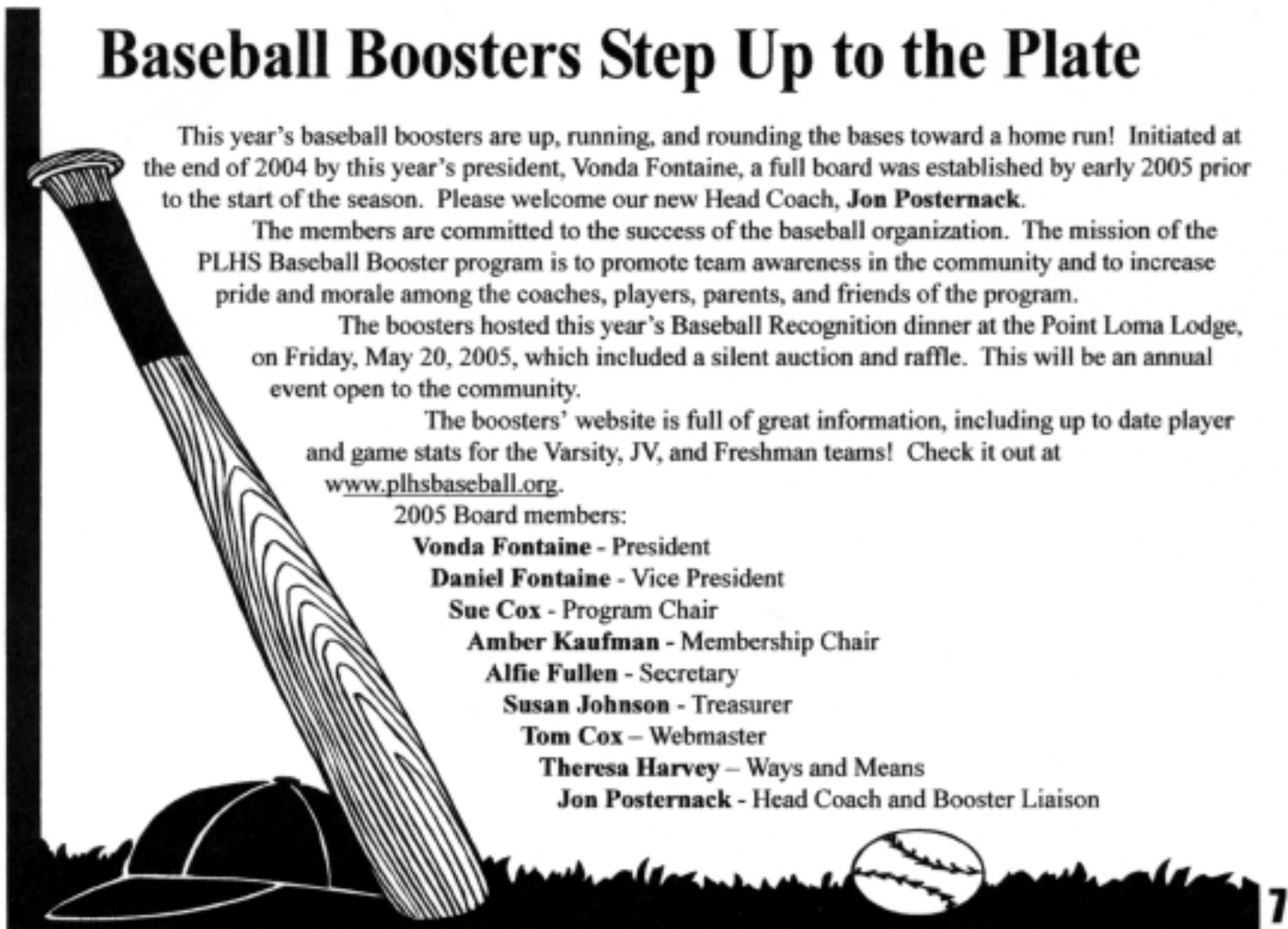
Alfie Fullen - Secretary

Susan Johnson - Treasurer

Tom Cox - Webmaster

Theresa Harvey - Ways and Means

Jon Posternack - Head Coach and Booster Liaison



What Have You Got to Say For Yourself??

Are you a PLHS Alum? Tell us what's been happening in your life! Admit it - isn't one of your favorite things about the newsletter finding out how the old cronies are doing? Email the news to kimj@plhsfaa.com and see your name in lights. Or maybe just in bold.

Does your employer match donations?

Ask your H.R. department if your company matches employee gifts to nonprofits-for organizations like PLHSFAA, it can be a huge boost and make your gift doubly meaningful! (Keep this newsletter for tax I.D. information.)



Donate appreciated stock!

If you've had a good year in stock investments, consider giving a gift of appreciated securities to PLHSFAA. In most cases, you'll receive a charitable income tax deduction for their full fair market value while avoiding capital gains tax liability.

To transfer stock to PLHSFAA's account at Charles Schwab & Co., Inc., or for more information, please call the Schwab Institutional Team #3 at 1-877-615-2384 for information about how to contribute to Point Loma High School Account #7144-4830.

Donate old cell phones & ink cartridges!

We can earn good cash for your throwaways! Have your child bring empty ink cartridges and unused cell phones to the office. We earn up to \$15 a phone and \$1.50 for the cartridges, thanks to a new eScrip program.

8 Questions? **Cathy Edging**, 224-6368.

POINTERS REUNITE!



Reunions Abound...

by *Susanne Ballantyne*

2005

Classes 26-42 - October 7th Annual luncheon at Tom Ham's Lighthouse. Contact **Maddy Mehus** at 619-582-0520.

Class of 1945 - No word on a reunion this year.

Class of 1949 - Second Thursday of July, September and November luncheon at Bali Hai. Contact **Dotty Thomas** at 760-431-7730.

Class of 1950 - October 15th at Southwest Yacht Club at 6:30PM. Contact **Susanne Ballantyne** (days) 858-277-5565 or email: scb4evr@aol.com

Class of 1955 - Sept 9th/11th-Friday at SDYC, Saturday at Shelter Pointe Hotel(formerly Kona Kai), Sunday TBA. Contact **Heidi Forchette** at 619-582-5080.

Class of 1960 - July 30th at Bali Hai. Contact **Jan Pruitt** or **Kathy Williams** (days) 619-222-0316.

Class of 1965 - August 13th at Bali Hai. Email: pl65reunion@yahoo.com for info.

Class of 1970 - July 15th at Bali Hai. Contact **Kim Gestra** at 619-223-5239.

Class of 1975 - August 20th at Hilton Resort-Mission Bay. Contact **Katy Blair Philyaw** at 858-578-7524.

Class of 1980 - No reunion this year.

Class of 1985-August 19th/21st. Friday at Bringatine for Happy Hour, Saturday at Bali Hai and Sunday at Kellogg Beach. Email:jennifer.hreljac@thomson.com

Class of 1990 - No contact on this year.

Class of 1995 - August 13th at Harbor Island Hilton. Contact **Maile Silveira** at 619-563-2418.

2006

Class of 1951 - In planning stages. Contact **Joanne Greenwell Hewitt** at 619-222-7861

Class of 1996 - **Kim Parker Matranga** is working on this reunion. Her phone is 619-471-6029 or email: plreunion96@yahoo.com

Point Loma High School Safety & Landscape Improvements UPDATE

*By Camilla Ingram
Chair, Safety & Landscape Improvements Committee*

There have been several exciting developments regarding the Point Loma High School Safety and Landscape Improvements project. With the help of John De Beck, San Diego School Board Member and Point Loma High School alumnus, we are making some real progress in obtaining both approvals and additional School District funding for the project. In addition, Gretchen and Pete Pelletier, Lee Edging, and Doug Harvey have been meeting with local contractors who are coming on board to help with the implementation of the project. We still need some significant contributions to make Point Loma High School Safety and Landscape Improvements a reality, but with the help of people who believe in the project, we are making substantial progress.

John De Beck and the School District staff have been incredibly helpful. With John's help, we have obtained commitments from the School District to provide funding for some portions of the project. At a joint meeting in April, John told us that he believes strongly in this project and what we are trying to accomplish to improve the safety and appearance of the school on Chatsworth Boulevard. The School District folks, including the School District Architect, James Watts, have also expressed strong support for the project, saying that this type of foundation and community-sponsored capital improvement project is a significant help to the schools. At this point, the School District has verbally committed to contributing the costs of the project manager and the inspection fees to the project. Since these fees are typically 18% of the total project costs, estimated at \$400,000, this is very significant (around

\$72,000). They are also looking into paying for the installation of the central portions of the irrigation system, including the computerized controller that will allow the irrigation system to be turned on and off from the School District's Maintenance and Operation Center (approximately \$25,000).

Parents, alumni, and the community can look forward to seeing visible progress on the project this summer. With Mr. De Beck's and the School District staff's help we were able to get approval to proceed with the installation of the monument sign on the hillside at the head of Voltaire. We may also proceed with the primary monument sign to be installed under the Torrey pines at the main entrance. Point Loma High's principal, Bobbie Samilson, is providing the funding for this work from Proposition MM funds.

This is an ambitious project, requiring full construction drawings and signoffs by the School District and City of San Diego. Our architect, Scott Molentin at Estrada Land Planning, has done an excellent job preparing these plans. He has informed us that so far we have not hit any snags in the approvals.

Fund-raising is still key to our efforts. With the help and support of various individuals in the City of San Diego and the School District we have commitments close to \$100,000 toward the project. That leaves us still in need of approximately \$350,000 from the friends of Point Loma High School. With your help we can get there. *Please consider a tax-deductible contribution to the PLHSFAA, earmarked toward the Landscaping Project.*

The new and improved PLHSFAA website....check it out! www.plhsfaa.com

The PLHSFAA website has been undergoing changes for several months. We are now proud to announce that it is updated and current....and we have added an exciting new feature....PLHS Class lists! You can go to www.plhsfaa.com and look up your Class roster. (Please note: Bear with us....we are using a database that may not be 100% accurate at this point, and we welcome any corrections!) Over time we hope to expand this section to include biographical and contact info and pictures for those alumni who send in a personal bio. We will even be able to put you in contact by email with former classmates and friends who have indicated they would like their info

to be made available. For a sample of what EVERY class roster could look like, check out PLHS Class of 57. We are looking for an Alum from each Class year to serve as the coordinator for their class roster and biographies. (You do not have to be 'web savvy'.... We will show you how!)

If you are interested contact Kimj@plhsfaa.com.

eScrip = \$\$\$ 4 PLHS!!!

Even if you've registered your Vons and credit card with eScrip before, they require annual verification. It's easy, and it's very, very important for PLHS!

1. Clip and place this note on your computer as a reminder
2. Go to www.escrip.com
3. Click on Members/Supporters
4. Follow the prompts
5. **Be sure your donations are going to Point Loma H.S. Foundation and Alumni!**

If you've registered before, you only need your phone number to log in - *it's really easy!*

If you shop at Albertson's and would like us to mail you a PLHS card to scan when shopping, call Cathy Edging (224-6368) or Gretchen Pelletier (223-5227).

Visit the Point Loma Waterfront Market! Saturdays from 9am - 1pm

Organic Fruits and vegetables

Fresh flowers, dried flowers and plants

Gourmet foods and baked goods

Home decor and French linens

Specialty soaps and candles

Handcrafted jewelry

Fashion accessories



*Located at the historic Naval Training Center. Take Rosecrans Street to Farragut Road. The Market is in the parking lot of High Tech High. **Proceeds benefit the Point Loma High School Foundation and Alumni Association.***

The mission of the Point Loma High School Foundation and Alumni Association is to support Point Loma High School in maintaining educational excellence that is a source of pride to students and the community for now and future generations.

POINT LOMA HIGH SCHOOL FOUNDATION & ALUMNI ASSOCIATION

Board of Directors

Radmila Fulton	Co- President
Karen Tisdale	Co- President
Bobbie Samilson	PLHS Principal
Will Hage	President-Elect
Mike Hix	Immediate Past President
Bonnie Johnson	Treasurer
John Baker	Recording Secretary
Laurie Hurl	PLHS Staff Liaison

Ann Hix
Susanne Ballantyne
Leslie Rose
Leslie Bruce
Will Hage
Pat Baker
Rick Alexander
Whitney Skala
Debbie Clauson
Pat Fitzmorris
Pat Baker
Cathy Edging
Mike Hastings
Carol Moore
John Bauer
Roger Brenes
John Freeman
Doug Harvey
Camilla Ingram
Vikki Korporaal
Charry Palma
Gretchen Pelletier
Larry Zeiger
Kim Melhorn Jessop

Landscaping Project
VP Alumni
VP Membership
Newsletter Editor
Golf Tournament Chair
Gifts and Grants Chair
Girls Cross Country
Football Boosters
Cheer Boosters
Dance Boosters
Band Boosters
Escrip
Member at Large
Historian



Executive Director

Point Loma High School Class of 2005 College Choices

University of California

UC Berkeley – 10
 UC Davis – 8
 UC Irvine – 1
 UC Riverside-2
 UC Santa Barbara – 6
 UC Santa Cruz – 10
 UCLA – 7
 UCSD – 4

Cal State

Cal Poly Pomona-1
 Cal Poly SLO – 11
 Cal State Fullerton – 2
 Cal State San Marcos – 1
 Chico State – 2
 CSU Channel Islands – 1
 CSU Sacramento – 2
 CSU Fullerton-2
 Humboldt State Univ-2
 Long Beach State – 1
 Maritime Academy-1
 San Francisco State – 6
 San Jose State-2
 SDSU – 48

Community Colleges

Cuyamaca College – 1
 Grossmont College – 15
 Hawaii Community College – 1
 Mesa College – 83
 Mira Costa College-8
 Orange Coast College-1
 Pasadena City College-1
 Pennsylvania Community College-1
 Riverside City-1
 San Diego City College – 37
 Saddleback-2
 Santa Barbara City-2
 Santa Monica City College – 1
 Southwestern College – 28

California Private

Art Institute of SD – 2
 Art Institute of Los Angeles-1
 Biola University – 1
 Brooks Institute-3
 Chapman-1
 FIDM – 1
 Loyola Marymount-1
 Marymount (Palos Verdes)-2

Menlo College-1

San Diego Christian College-1
 St. Mary's College of California- 1
 University of Redlands-2
 University of San Francisco-1
 University of Southern California-3
 U.S.D. – 4
 Westmont – 1

Out of State

Arizona State University – 2
 Art Institute of Houston – 1
 Boston College – 1
 Chapman University-1
 Clark Atlantic University-1
 Colorado State University – 1
 Columbia University-1
 Dartmouth College-1
 Fairfield University-1
 Furman University-1
 George Washington University-1
 Georgetown University-1
 Georgia Institute of Technology-1
 Harvard-1
 Miami University-1
 Northwest Nazarene – 1
 Seattle Pacific University-1
 Texas A&M-1
 Texan Christian University-1
 Universidad Autonoma De Mexico-1
 University of Arizona – 3
 University of Chicago – 1
 University of Colorado – 2
 University of Denver-1
 University of Las Vegas-3
 University of Puget Sound – 1
 University of Massachusetts-1
 University of Oregon-1
 University of Utah-1
 University of Washington-1
 Western Washington University-1
 Young Judea-Jerusalem

Military

U.S. Airforce-2
 U.S. Army-1
 U.S. Naval Academy - 1
 U.S. Marines - 4
 U.S. Navy – 2

Traveling

Japan-1

Special Thanks to our Donors

A very special THANK YOU to our members, contributors and supporters who responded to our Spring fund-raising drive! Your donations to the Foundation and Alumni Association help us make the difference at PLHS! Special thanks to our Lifetime Members (names all in capital letters below) for their continued support through additional contributions every year.

Won't you join this list of great alumni and supporters? Please join us, renew your membership, or help us with a sustaining contribution by completing the form in this newsletter and sending it in today!

ELIZABETH AUSTIN
John and Sheila Bauer
Sharon Bernie Cloward
JOHN E BRENNAN
Julie Brizendine
Eleanor Pastore Brown
Leslie & Clint Bruce
Hallie Burch
JACQUELINE BYROM
WILLIAM L CALLAWAY
SHIRLEY CAMPBELL
NORMA CAMPILLO
Peter Carl
Vickie & Homer Chin
JOHN R CLEATOR
ROBERT J CLOUGH
JACQUELINE CUMMINS
DONALD E DAVIS
Elizabeth Davis
JAMES C. DAVIS
RUTH DAVIS
MICHAEL B DOLPHIN
JULIE AND WALTER DUFFETT
Paul Elam
ROBERT G FERVER
Jeff and Kim Fink
Jim Fink
Michael & Marisa Fink
NICHOLAS M FINTZELBERG
Arthur Fischer, Jr.
JOSEPH F FISCHER
VIRGINIA FISCHER
ANNE FOTHERINGHAM
M DIANNE FOWLER
JEANNE FROST
CAROL FUJIMOTO
Radmila Fulton
Patrick J. Gallagher
DR. JAMES GAUNTLETT
Miles Gavin
John & Dina Geary
GREGORY J GHIO
SUZANNE GILMOUR
CAROLYN GODDARD
Judy McLean & Neil Goldfinger
Donna Gookin
PATRICIA GREAVES
Ed & Mary Greif
Sandy Grove

Gail Conklin & Bud Hamilton
Robert and Laura Hammes
DON L HARRINGTON
Peter Harris
Richard Harsh
BRIAN A. HARTLEY
Doug Harvey
Michal & Tim Hawk
Norma J. Heeter
William Herrick
William B. Herrin
CAROL HILDRE
Jim Hitt
Jennifer Hreljac
Marie Huff
DAVID PETER HUGHES
Laurie Hurl
LOUISE JESSE
DORIS JONES
MONETTE KELLY
STEPHANIE KLOPFLEISCH
JAMES D KOWAL
David & Janet Lamott
PAULA LANDALE
JANE ANN LANGE
JAMES M LEE
Vivian Love
KARI NIELSEN MARTONE
CANDY McCROBIE
Mary McNaughton
Lila Lee Meyer
Milton D. Michael
MARSHALL MILTON
Kathy Monfort
JEAN MOOMAW
GERALDINE MULLET
Jennifer Ness
Karen Ness
LINDA NUGENT
William J. Oakes
Margaret Mann & Michael O'Halloran
Virginia Paul Olsen
George S. Parry
DOREEN PAUL
THEODORE OTIS PAUL, MD
PETER H PECKHAM
Gretchen Pelletier
JAMES H PHELPS, MD
Yvonne Posner

Michael Price
EDWARD L. RAMSEY
LINDEN N RANEY
Sharon Reed
BERNA ROBB
Clint Roberts
Lorna M. Ross
Anne Rosser
DORIS SCHREFFLER
Carl & Kathy Schulze
PATRICIA SEMAN
NATALIE SERVICE
MARY SHIRKEY
MANUEL SILVA
Rosemarie Silva
Edward & Sandra Silverman
Carol B. Simpson
Robert H. Simpson
JAY A. SKIDMORE
Michael P. Smith
Mary Frances Smith-Reynolds
Peggy Strand
FREDERICK C. STROHTE
Steven D. Taylor
Marcia Jackson Thaxton
Larry Thomas
Deutilde Medina Varley
MAXINE WADE
MAURICE T WATSON
HARRISON W WEAVER
Linda Weber
LARRY & KATHERINE WILLETTE
ANDREW W. WILLIS
Richard F. Wilson
DONALD R. WOZNIAK
MARYBETH BURNHAM
Julie Rogers
Kris & Everett Barry
Judy Najera
Marion Augustine
HOWARD LITTLEFIELD
JUDY SCHONS
Allison Pollock Carpenter
Geri Nielsen
Bill Hines
NORMAN & KAY NILES
Pat Buchanan
GORDON THOMPSON Jr.
Charles Hines
DENNIS ELLISON

PLHS Band News

By Diana Antonini
PLHS Band Booster President

The Point Loma Concert Band and Wind Ensemble have been very busy this semester filling the spring air with beautiful music, whether at concerts, fundraisers, or special events. February found the Band playing at the Booster Golf Tourney held at the Auld course. They played for the golfers, and helped raise \$4,500 net for their band.

Thank you to Ray Havens for chairing the event.

March was "Sleepless in the Band Room", as the Band Council had a Rehearsalathon from 10p.m. to 7a.m. where they played in 45 min. intervals with



PLHS sax players regale guests at the recent Crescendo fundraiser.

10-minute breaks. The money they raised went towards their Music in the Parks competition at Magic Mountain. They also competed in the Eastlake concert festival against several other local concert bands where they received marks of Excellence and bought home several trophies.

April has kept the Band in tune as they had music events every week. First there was the All City Honors Band where individual students from local high schools competed. The best of these students were selected to perform a concert at the Copley Symphony Hall. Eleven students chosen were from the PLHS Band! They also performed at the Peninsula Concert at PLNU, at the Concert Series at the Point Loma Library, and their Spring Concert at Crill Hall. KFMB Channel 8 also showcased them for a "Cool School Story" which can be found on the KFMB website. Pat Baker and Sandy Grove co-chaired "Crescendo" a Friends of the Band fundraiser, where our talented musicians played in the gorgeous gardens of the Rosecroft mansion. They helped bring in \$9,200 net for their band, as they performed for our generous donors. At the end of April they played at the Music in the Parks concert competition and again both the full Band

and the Wind Ensemble received Superior ratings. The Band came home with 1st place in Division 2AA and 2nd in Division 1AA.

May was just as busy with a Booster Rummage Sale fundraiser being held at the Kobey Swap Meet on May 7 and the Band's performance at the Portuguese Festa Parade on May 15. If you have not had a chance to catch our award-winning band yet, you can run down to the "Rock and Roll Marathon" on June 5th and hear them perform for the runners.

It is true that our band has been busy, but not too busy to take a moment and thank the Foundation, Staff, Faculty, PTSA, Booster groups, Parents and our Community for your never ending support. To all of you we give a standing ovation, as we wouldn't be where we are without each and everyone of you.



PLHSFAA Funds Enhance PLHS Facilities

By Pat Baker

In fall of 2004, the Point Loma High School Foundation and Alumni Association allocated \$7000 in proceeds from the November 2003 Jason Scheff benefit concert to be spent on PLHS Visual and Performing Arts Programs.

Our top priority was a number of upgrades and improvements to the sound system in the Performing Arts Center. We heard the results of this effort in the wonderful sounds of "Lucky Stiff", the winter musical presented by the Drama Department. These technical and operational improvements with benefit the Instrumental Music Department, the Choir program, and the Zeiger Show as well.

With about \$4700 left to spend, we made the following awards in response to teacher requests:

- **John Dally**, Band-Over \$1500 for computer software for music composition and transposition, computer software to support instrumental learning and practice, electronic metronome, and a chair move-and-store cart to help with the challenges of space utilization in the Band room.
- **Sarah Suhonen**, Choir-Over \$600 in music for the growing Choir program.*
- **Larry Zeiger**-Over \$2600 for electronic components for DVD/video production and computer software tools for screenplay writing. Mr. Zeiger correctly points out that this equipment and these software tools will be available to any student in any class who may choose to make a film presentation as part of a class project.

Many of the granted items have been ordered and are being used on a daily basis. All purchases should be complete by the start of the next school year.

**If you attended the recent PLHS Choir Concert, you know they have come a long way this year thanks to Director Sarah Suhonen.*

The PAC was pretty full—this being a joint concert with the Peninsula Singers, the local all-ages chorus that meets at the Library on Monday evenings. So the event brought a good number of individuals from the community to our campus.

The music sounded great! The investment that the Foundation made in the sound system has been well spent!

Sarah specifically thanked the PLHSFAA for her grant. She pointed out that all the selections they sang were purchased due to the generosity of the Foundation.

The sound system is much better thanks also to PL alum David Leyton who guided the purchase of the new microphones and spent several hours checking them before the performance microphones.

It's SHOW TIME

THE 29TH ANNUAL ZEIGER SHOW

...Is It Possible????

By Larry Zeiger

THE GOTTA SING GOTTA DANCE NUEVO COMPANY proudly presented the **29th most lavish high school musical in the history of the world!** (We do not fool around) - **THE PRINCESS OF PRINCETON - A FAIRLY TRUE FAIRY TALE** is a spectacular, audacious, and scintillating story of a young girl from Death Valley, California who wins a scholarship to Princeton University where she suddenly finds herself thrown into a world of magic and mayhem, reality and fantasy, and love and murder!!!!

Cast of 70, production crew of over 100, nearly thirty writers and storytellers, great songs (Motown, Big Band, Rock n'Roll, Rap) and incredible choreography! Special guest appearances were made by the Bush Administration and even local celebrities!

The performance this year was due to the generosity and support of the **HERVEY FAMILY FUND, THE MORTON FAMILY (Brigantine, Miguel's), several very helpful parents, incredible alumni, and a dynamic and creative cast of Point Loma students!** And I wouldn't want to forget **Old Venice Restaurant and the people at Baleen's for keeping me sane. . .**

It was a fabulous show!

IN MEMORIAM

Thomas E. Groeschel	Class of 1939
Duane Rainville	Class of 1946
Jean Douglas Lomax	Class of 1950
Edward Alan Person	Class of 1952
Helen DuPaul Bedford	Class of 1955
Caryl Barbour	Class of 1965
Karen Wilkin-Glass	Class of 1971
Michael Moniz	Class of 1979
Janet Zaitz Hepp	Class of 1980

Be a Permanent Part of PLHS with your Customized Commemorative Brick!

This year Point Loma High School celebrates its 80th birthday – imagine students for the next 80+ years seeing your name on a brick that shows you supported and cared about the future of this school.

The PLHS Commemorative Brick Program is an important fund-raiser in two ways: The bricks provide a permanent way for families past and present to proudly show their connection to this school. Second, the proceeds go directly toward our landscape renovation project, another proud legacy of this school's supporters.

Each brick is \$100. It measures 8" x 4" and will display up to three lines, 20 characters each (including spaces and punctuation). Bricks will be displayed vertically along the seat wall in the proposed new landscape.

All bricks will feature names and, if you like, class years. Following are three examples from supporters who have already purchased bricks:

James M. Lee '34

Reed-Dittrich Family
Jessica '04 and Mark '06

Patrish Butler '74
Liz Seman '05
Katie Seman '07

Please consider a gift of a brick – your permanent way to support Point Loma High School! Because this is a comprehensive improvement campaign, bricks will be installed in the future – we appreciate your support of PLHS's long-range plans! (mailing address of the Foundation)

PLHS Commemorative Brick
One - three lines of copy, up to 20 characters per line:

1 _____
2 _____
3 _____

Name: _____ Telephone: (important!) _____

Email (print clearly): _____

Are you a PLHS Alum? Class of: _____ Maiden name _____

Address: _____
Zip: _____

Paid by Check or Credit Card: Visa MasterCard

Card #: _____

Exp. Date: _____ Zip code: _____

Signature as it appears on card: _____

**Point Loma High School
Foundation & Alumni Association**
1220 Rosecrans St., Box 247
San Diego, CA 92106-2674

Non-Profit
U.S. Postage
PAID
Permit #51
San Diego, CA

Spotlight

ZEIGER STUDENTS WIN MAJOR AWARDS!

By Larry Zeiger

Point Loma High's NATIONAL COMEDY THEATRE team was the winning improvisational comedy group in San Diego County. The team competed with 22 County High Schools and was awarded the Top Trophy. As a result of the win, they competed in a public performance at the National Comedy Theatre on India Street - the performance was sold out to the public and written up in *CITY BEAT* and the *PENINSULA BEACON*. Students on the team attended monthly workshops and competed in 15 performances throughout the year.

Point Loma High won the top honor at the Innovative Video in Education Awards with the winning film of **Jesse Brunt** (Class of 2004) and **Tyler Knell** (currently a junior). Their film, RECYCLE received tremendous applause at the Spreckels Theatre to a packed audience. Two of the presenters were Point Loma Alumni - **Chris Brinker** (film producer, Class of 88) and **Mark Skidmore** (Executive Director of Information Technology at 20th Century Fox, Class of 80). At this writing, **Josh Lizarraga** (Class of 2005) is being considered for a Regional Emmy Award for his film, TWISTED NERVE.

Some of the top films from the film classes will be submitted this summer to the prestigious Los Angeles International Short Film Festival to take place in September, 2005 at the ArcLight Cinema in Hollywood. Last year, Jesse Brunt and Tyler Knell's award-winning 24 HOURS TILL CHRISTMAS was screened at this festival (one of the only high school films accepted in the world).

Approximately 90 students participated both on stage and backstage in the 29th *Gotta Sing Gotta Dance* production, THE PRINCESS OF PRINCETON. Point Loma High is one of the only high schools in America which creates an annual original musical with such enormous participation by so many students. Next year, the 30th year, we are looking for alumni/community members to organize a 30 year Reunion of all casts and friends of Gotta Sing Gotta Dance. If you are interested, contact Larry Zeiger at LZeiger@aol.com